

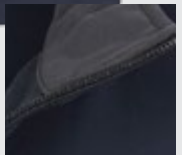
ALPINE SOFT-TEC VEST

MENS CODE **SLR087**

LADIES CODE **SLR089**



French Navy



FEATURES

Main & hand warmer zippers in contrast colour. Internal storm flap. Soft tricot zip protector. 2 zippered hand pockets. 2 hem toggles and keeper. Invisible decoration zipper on left side. Embossed Sporte device zip pullers. Sporte device on back collar.

MATCHING JACKET: MENS AND LADIES PERISHER SOFT-TEC JACKET | SLR086 | SLR088

COLOURS

MENS



Black

Charcoal

French Navy

LADIES



Black

Charcoal

French Navy

SIZING AND FIT

MENS ALPINE	S	M	L	XL	XXL	3XL	5XL
HALF CHEST (cm)	55.5	58	60.5	63	65.5	68	74.5
LADIES ALPINE	8	10	12	14	16	18	20
HALF CHEST (cm)	49.5	50.5	53	55.5	58	60.5	63

CATEGORY

SOFT-TEC

FABRIC

95% Soft-Tec, 5% Spandex outer / Fleece with matte finish

WEIGHT

260 GSM

UPF RATING

N/A

TARGET MARKETS

Legal/Finance/I.T; Real Estates; Motor Dealerships; Aged/Health Care; Hotels and Clubs; Tourism and Transport; Local Government; Mining